



ESCAPE HUNT

EPIC TEAM ADVENTURES

SOCIAL EVENT PACKAGES



EMAIL

sydney@escapehunt.com

Or visit escapehunt.com/au/sydney/social-events/



'THE ROLLS ROYCE OF ESCAPE ROOMS'

ESCAPE HUNT IS LOVED BY:

Google



Commonwealth Bank



Coca-Cola



HSBC

amazon

EMAIL

sydney@escapehunt.com

or visit escapehunt.com/au/sydney/social-events/



**5* RATED INDOOR & OUTDOOR
ESCAPE ROOM THEMES**



**LOUNGE, MEETING
SPACE & ROOFTOP VENUE HIRE**



**CATERING & DRINKS
PACKAGES**



FUN PHOTO OPPORTUNITIES



**EXPERT GAME HOSTS &
EVENT PLANNERS**



EMAIL

sydney@escapehunt.com

Or visit escapehunt.com/au/sydney/social-events/



TEAM ADVENTURE AWAITS

Leap into new worlds, find clues and complete ground-breaking missions in an adrenaline-fuelled race against the clock.

Packed with excitement, our team building experience boosts morale, drives motivation and inspires communication and problem solving.



**'THIS MAY JUST BE
THE ULTIMATE TEAM
BUILDING ACTIVITY'**

STYLIST MAGAZINE



**'A GREAT WAY TO DO
SOME TEAM BONDING...
SO MUCH TEAM FUN'**

VIRGIN

EMAIL

sydney@escapehunt.com

Or visit escapehunt.com/au/sydney/social-events/

TEAM SOCIAL



**1 ESCAPE ROOM
PER PERSON**

8 – 100 PARTICIPANTS

1.5 HOURS

**\$40PP
+\$10PP ADD A DRINK**

TEAM SOCIAL X 2



**2 X ESCAPE ROOMS
PER PERSON**

8 – 50 PARTICIPANTS

3 HOURS

**\$75PP
+\$10PP ADD A DRINK**

TEAM SOCIAL OUTDOORS



**1 OR 2 X OUTDOOR ESCAPE GAMES
OR 1 INDOOR AND 1 OUTDOOR GAME**

8 – 100 PARTICIPANTS

1.5 OR 3 HOURS

**\$30, \$55 OR \$70PP
+\$10PP ADD A DRINK**

FEATURED IN ALL EVENTS



PHOTO SESSION
WITH PROPS

OPTIONAL EXTRAS

- ✕ Add on a drink (alcoholic or non-alcoholic) \$10pp
- ✕ Merchandise package starting from \$5pp
- ✕ Catering and drink packages (refer page 11)

EMAIL

sydney@escapehunt.com

Or visit escapehunt.com/au/sydney/social-events/

TEAM SOCIAL QUIZ ROOM



1 X ESCAPE ROOM

2 X QUIZ ROOM IMMERSIVE TRIVIA GAMES

8 – 100 PARTICIPANTS

2.5 HOURS

\$80PP

+\$10PP ADD A DRINK

TEAM SOCIAL VIRTUAL REALITY



1 X ESCAPE ROOM

1 X VR ESCAPE GAME ADVENTURE

8 – 24 PARTICIPANTS

2.5 HOURS

\$90PP

+\$10PP ADD A DRINK

VENUE HIRE



EXCLUSIVE FULL VENUE HIRE

8 – 100 PARTICIPANTS

3 – 8 HOURS

CUSTOM QUOTE ON REQUEST

FEATURED IN ALL EVENTS



PHOTO SESSION
WITH PROPS

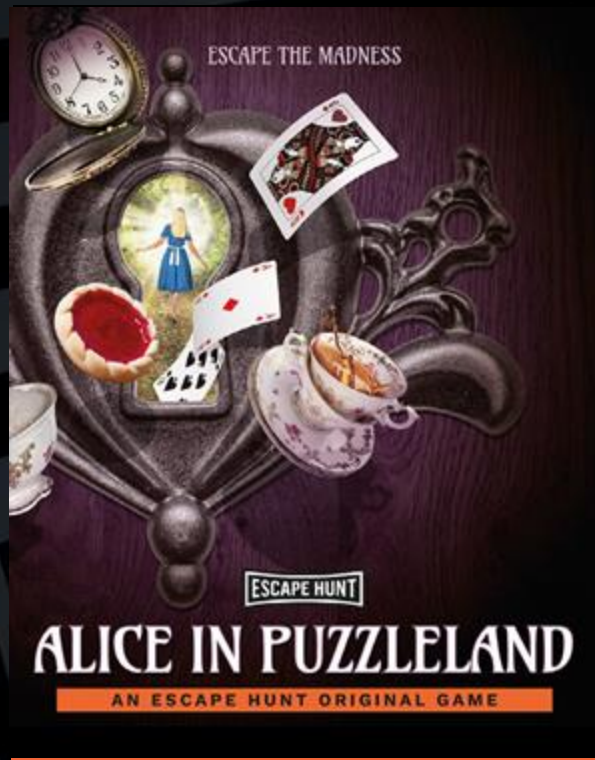
OPTIONAL EXTRAS

- ✦ Add on a drink (alcoholic or non-alcoholic) \$10pp
- ✦ Merchandise package starting from \$5pp
- ✦ Catering and drink packages (refer page 11)

EMAIL

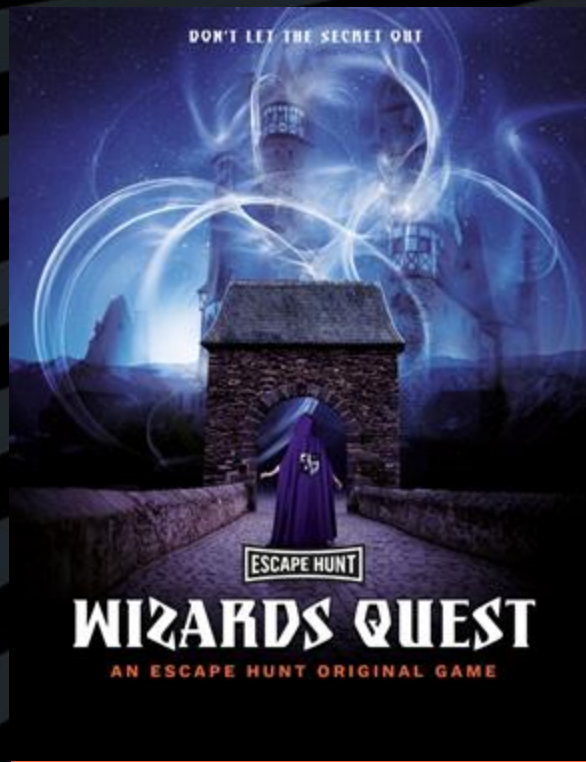
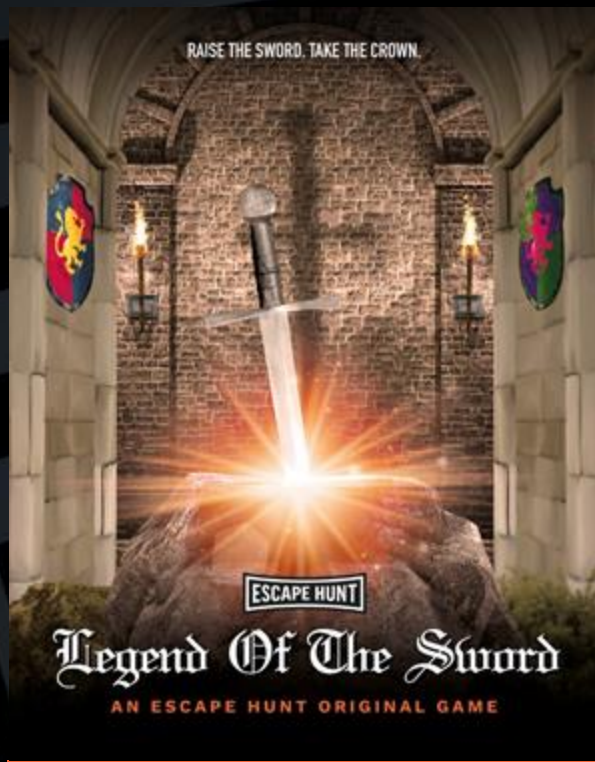
sydney@escapehunt.com

Or visit escapehunt.com/au/sydney/social-events/



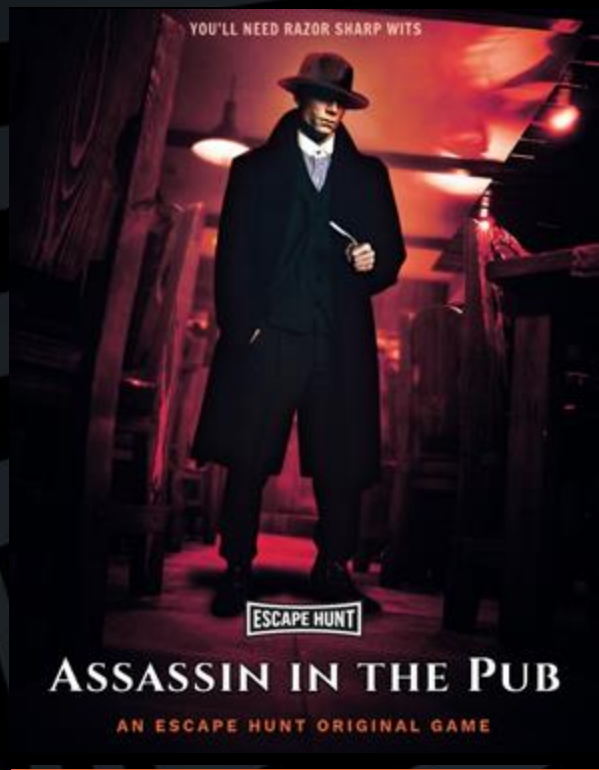
INDOOR ESCAPE ROOMS - CLICK IMAGE FOR DETAILS

Step into an out of this world adventure with our highly immersive 5* escape rooms where you'll experience pulse-racing real-life adventures



INDOOR ESCAPE ROOMS - CLICK IMAGE FOR DETAILS

Step into an out of this world adventure with our highly immersive 5* escape rooms where you'll experience pulse-racing real-life adventures



'Fantastic experience! I went here for a team bonding activity'

GOOGLE REVIEW



'The Rolls Royce of escape rooms'

GOOGLE REVIEW



'We had a blast! Kind staff and great quality rooms'

GOOGLE REVIEW



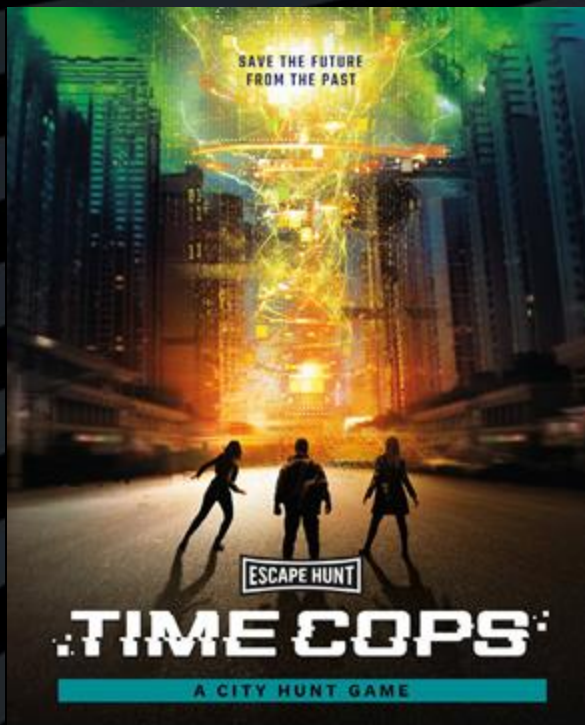
'Best 60 minutes ever!'

TRIPADVISOR REVIEW



INDOOR ESCAPE ROOMS - CLICK IMAGE FOR DETAILS

Step into an out of this world adventure with our highly immersive 5* escape rooms where you'll experience pulse-racing real-life adventures



OUTDOOR ADVENTURES - CLICK IMAGE FOR DETAILS

Imagine an escape room with no doors, a treasure hunt with more challenges, and a city like you've never seen it before. Step outdoors in these outdoor city hunt adventures.

OPTIONAL EXTRAS – LOFT ON GEORGE EVENT SPACE



Main Space & Large Balcony



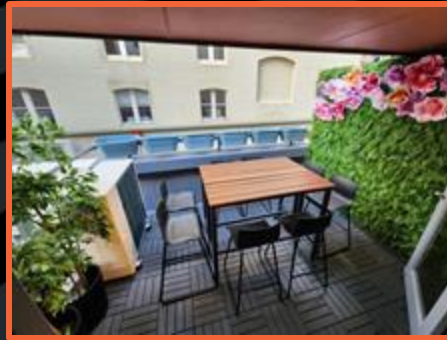
Party Nook



Main Space & Party Nook



Large Balcony



Small Balcony



Upper Conference

We are a licensed venue. Party Nook is shared space with the Main Space where people may be consuming alcoholic beverages

OPTIONAL EXTRAS – LOFT ON GEORGE EVENT SPACE

We offer a private meeting and event space on level 7 just above Escape Hunt. There are multiple spaces for hire including the main space, balconies and a conference space.

It is fully licensed and offers a range of food and beverage options (see following page).

A single space can be booked or the entire venue can be hired. Hiring a single space means other groups may occupy another space during your event. If you wish to have full exclusivity, then you must hire the entire venue.

You can choose to hire an **area by the hour OR** commit to a **minimum spend per hour**.

If you choose a drinks package from the following page all venue hire fees will be waived for the space that is suitable for your group size.

| Area | Capacity | Price per hour | Minimum spend per hour |
|-------------------------------------|----------|----------------|------------------------|
| Party Nook | 12 | \$120 | \$240 |
| Small Balcony | 8 | \$110 | \$220 |
| Large Balcony | 12 – 16 | \$120 | \$240 |
| Main Space | 25 – 30 | \$175 | \$350 |
| Upper Conference Room | 25 – 30 | \$175 | \$350 |
| Main Space + Party Nook | 40 – 45 | \$250 | \$500 |
| Main Space + Party Nook + Balconies | 60 – 70 | \$300 | \$600 |
| Entire Venue | 80 – 100 | \$325 | \$650 |

OPTIONAL EXTRAS – LOFT ON GEORGE EVENT SPACE

A full range of catering options are available including breakfast, morning tea, lunch, afternoon tea, cocktail canapes and dinner – please request our latest brochure.

A selection of premium beers, ciders, wines and soft drinks are available for purchase on a pay as you go basis.

Alternatively, you can take a drinks package. All drinks packages include free venue hire at Loft on George:

- | | | |
|--|--------|---|
| • 1 Hour Drinks Package | \$30pp | Choice of water, soft drinks, beer, cider or wine |
| • 2 Hour Drinks Package | \$40pp | Choice of water, soft drinks, beer, cider or wine |
| • 3 Hour Drinks Package | \$50pp | Choice of water, soft drinks, beer, cider or wine |
| • 4 Hour Drinks Package | \$60pp | Choice of water, soft drinks, beer, cider or wine |
| • BYO catering is available for \$7.50pp (NOTE: no BYO for drinks) | | |



Please consult staff for any special dietary needs

NOTE: We are a Responsible Service of Alcohol venue and drinks will not be served to intoxicated persons



**WE LOOK FORWARD TO WORKING WITH YOU
TO CREATE AN EPIC EVENT FOR YOUR GROUP**



CONTACT US

Visit Our Website: escapehunt.com/au/sydney/

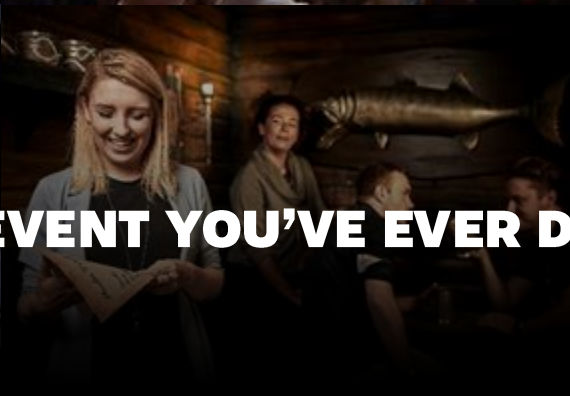
Call Us: 02 9299 3929

Drop Us An Email: sydney@escapehunt.com

EMAIL

sydney@escapehunt.com

Or visit escapehunt.com/au/sydney/social-events/



UNLIKE ANY EVENT YOU'VE EVER DONE BEFORE

EMAIL

sydney@escapehunt.com

or visit escapehunt.com/au/sydney/social-events/

KEY TERMS AND CONDITONS

- ✦ Full pre-payment is required at least 7 days prior to your event for the estimated number of participants – payment can be credit card, bank transfer or PayPal
- ✦ Minimum numbers: there is a minimum of 8 participants for our team building packages
- ✦ Final attendee numbers must be provided 7 days before the event. If additional numbers attend on the day, these will be charged for onsite during the event or via invoice after the event.
- ✦ Special requests: if you have any special requests (e.g. TV or audio visual) please let us know in advance
- ✦ Catering, Loft on George and drinks packages are nonrefundable
- ✦ On-site catering options are made fresh to order – changes or cancellations must be made at least 7 days before the event
- ✦ Cancellations:
 - Events cancelled with 7 – 14 days notice will be refunded 50% of the event charge
 - Events cancelled with 15 – 30 days notice will be refunded 75% of the event charge
 - Events cancelled with more than 30 days notice will be refunded 100% of the event charge
- ✦ Rescheduling: events may be rescheduled with at least 3 days notice:
 - Events rescheduled with 3- 6 days notice will attract a 20% rescheduling fee (excluding catering costs)
 - Events rescheduled with 7+ days notice can be rescheduled for free
- ✦ Venue Cleanliness: To maintain a clean and enjoyable space for all guests, confetti, glitter-filled balloons, and party poppers are not permitted within the venue. Any unreasonable mess created during the event will incur a cleaning fee, charged to the booking party. We appreciate your cooperation in helping us keep the venue welcoming for everyone.

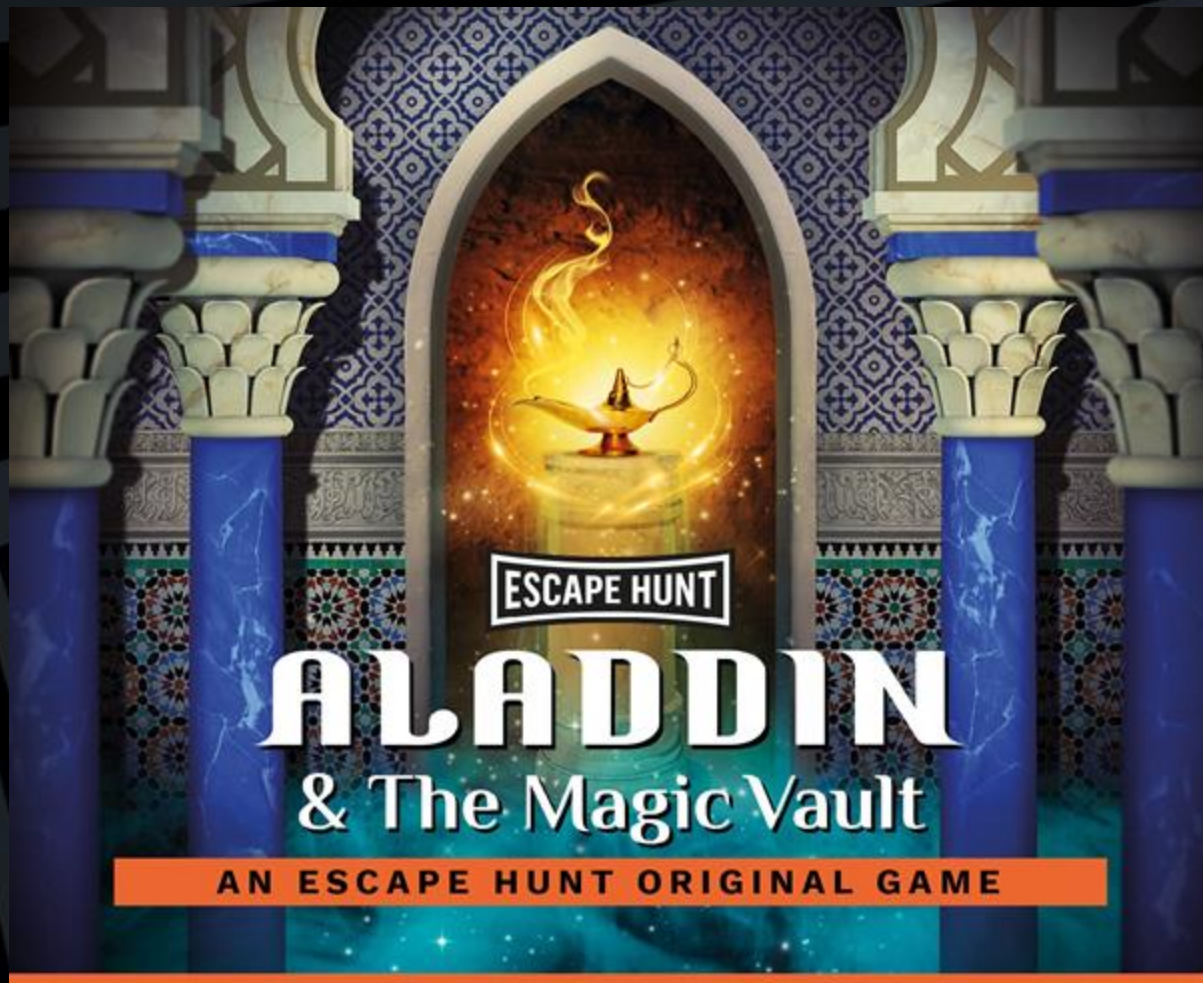
APPENDIX EXAMPLE GAMES



EMAIL

sydney@escapehunt.com

Or visit escapehunt.com/au/sydney/social-events/



The evil Sorcerer Abanazar has tricked Aladdin out of the magical lamp. It's up to you to retrieve it from his impenetrable Magic Vault. Can you rescue the genie before it's too late?



HOW MANY

4-10



HOW LONG

60 minutes



HOW OLD

PG (7+)

Adults must accompany u16's in the room

EMAIL

sydney@escapehunt.com

Or visit escapehunt.com/au/sydney/social-events/



EMAIL
sydney@escapehunt.com
Or visit escapehunt.com/au/sydney/social-events/



The Mad Hatter is in trouble after being accused of stealing the Queen's Tarts. Step into Wonderland and save him from the Queen of Hearts without losing your heads. Chop Chop.



HOW MANY

2-6



HOW LONG

60 minutes



HOW OLD

PG (7+)

Adults must accompany u16's in the room

EMAIL

sydney@escapehunt.com

Or visit escapehunt.com/au/sydney/social-events/



EMAIL
sydney@escapehunt.com
or visit escapehunt.com/au/sydney/social-events/



Can you help the White Rabbit return the citizens back to Wonderland? Hit the streets with your action pack picnic hamper and digital map and complete the Wonderland puzzles before the time runs out. Tick Tock.



HOW MANY

2-6



HOW LONG

90 minutes



HOW OLD

7+

EMAIL

sydney@escapehunt.com

Or visit escapehunt.com/au/sydney/social-events/



Become Time Cops and stop the deadly artificial intelligence from being released! Hit the streets with a briefcase full of gadgets and a device that communicates with the future, can you help save humanity?



HOW MANY

2-6



HOW LONG

90 minutes



HOW OLD

7+

EMAIL

sydney@escapehunt.com

Or visit escapehunt.com/au/sydney/social-events/



EMAIL

sydney@escapehunt.com

Or visit escapehunt.com/au/sydney/social-events/