

# SOCIAL EVENT PACKAGES

SYDNEY

**ESCAPE HUNT**

**EXCITEMENT. UNLOCKED.**





# WHAT IS ESCAPE HUNT?

## NOUN

*Def:* Name given to **an hour of pure, unadulterated excitement**, during which you and your teammates lose yourselves in an incredible experience, working together to follow a series of fiendishly clever clues and escape a locked room.

## VERB

*Def:* The act of leaving humdrum everyday life behind for an hour of intense exhilaration, during which you and your teammates attempt to escape a locked room by following a series of wickedly cryptic clues.

# WHAT IS ESCAPE HUNT?



Escape Hunt is a real-life first person escape game concept



Teams of 2-6 are “locked” inside a room and must explore, solve riddles and clues to escape



Players need to be observant and use critical thinking skills to solve challenges and riddles



There is no strenuous physical activity involved. All you need is a healthy, working brain



Games are challenging, but can be solved with good teamwork, observation, problem-solving and communication skills



# HOW DO YOU ESCAPE HUNT?

## 1 STEP INTO A NEW WORLD



Assemble your best team of Escape Hunters. It's just you, four walls, the ceiling and the floor. The lock clicks. The clock ticks. Time is of the essence.

## 2 GET LOCKED IN AND CLUED UP



Use your eyes, ears and wits to find hints, crack the clues and solve your mission before time runs out.

## 3 BEAT THE CLOCK AND BREAK OUT!



If you're one of the lucky ones that is.

Celebrate your escape in our fully licensed event venue, large reception area or dedicated rooftop event space.

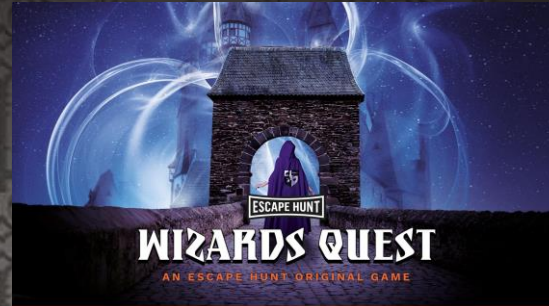
**ESCAPE HUNT**



# THE GAMES – INDOOR ESCAPE ROOMS



**1 ROOM UP TO 6  
PLAYERS**



**2X ROOMS UP TO 12  
PLAYERS (6 VS 6)**



**1 ROOM UP TO 6  
PLAYERS**



**1 ROOM UP TO 6  
PLAYERS**



**1 ROOM UP TO 6  
PLAYERS**



**1 ROOM UP TO 10  
PLAYERS**



**7 X GAME ROOMS  
6 X GAME THEMES**



**PLAY HEAD TO HEAD  
ACROSS TWO ROOMS**



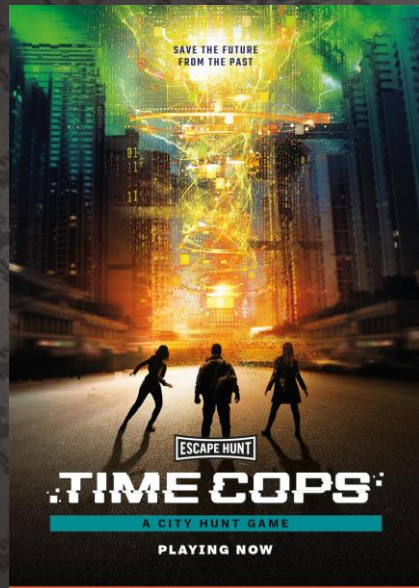
**4-10 PLAYERS PER ROOM  
46 PLAYERS AT ONCE**

**ESCAPE HUNT**

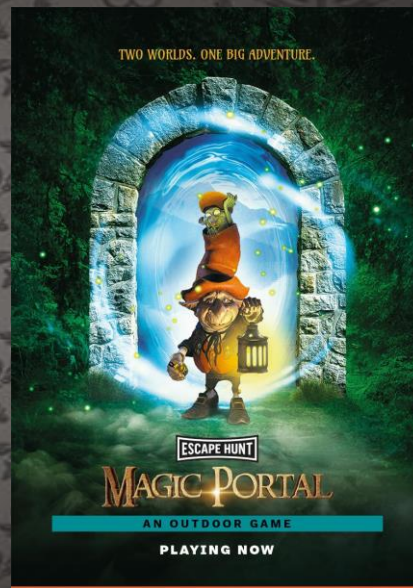


# THE GAMES – OUTDOOR ESCAPE GAMES

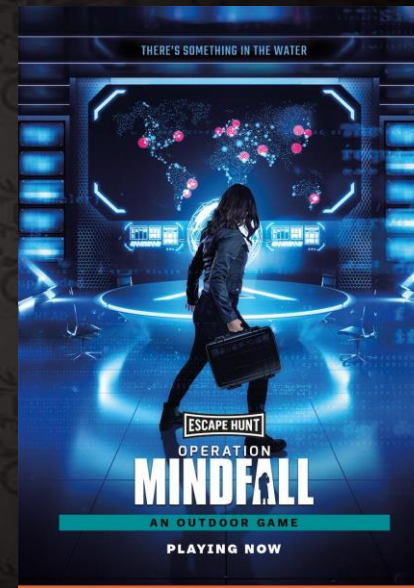
Step outdoors and explore your city during an incredible adventure that blurs reality and fiction using a combination of augmented reality and geolocation technology. You will venture off on an exciting mission around Sydney city complete with iPad and action pack for up to 2 hours.



**4X GAME PACKS UP TO  
24 PLAYERS (6 PER  
TEAM)**



**9X GAME PACKS UP TO  
54 PLAYERS (6 PER  
TEAM)**



**9X GAME PACKS UP TO  
54 PLAYERS (6 PER  
TEAM)**



**3 X GAME  
THEMES**



**PLAY HEAD  
TO HEAD**



**2-6 PLAYERS PER GAME  
54 PLAYERS AT ONCE**

**ESCAPE HUNT**



# YOUR TEAMS MATTER TO US



Escape Hunting is the ultimate team sport. You can only escape if you work together.

We love the idea of bringing people together through the power of entertainment. We want to give people the opportunity to share new experiences together, to discover new things about each other.

**ESCAPE HUNT**

# WHY TEAM BUILDING AT ESCAPE HUNT?

At Escape Hunt your team will enter a themed room, with a mystery to solve that will lead to their escape. With 60 minutes on the clock and magnifying glass in hand, they will search for hidden objects, decode clues and solve puzzles to help them crack the case and escape the room!



## TEAMWORK

---

Our puzzles can't be solved alone!

Teams need to work together and build trust in order to escape the room.



## COMMUNICATION

---

The pressure of a ticking clock puts even the best communication skills to the test.



## STRATEGY

---

Our escape rooms are an immediate way to demonstrate the impact effective strategy has on success.



## CREATIVE THINKING

---

Everything is not what it seems at Escape Hunt.

Teams will need to challenge their thinking to succeed.



## FUN

---

Escape Hunt is above all, FUN! This is a team activity with a difference that you won't forget.



# PACKAGE OVERVIEW



## TEAM SOCIAL

1 or 2 game sessions per participant  
8 – 92+ participants  
1.5 or 3 hours  
**\$42 pp or \$80pp**



## TEAM SOCIAL OUTDOORS

1 or 2 game sessions per participant  
8 – 100+ participants  
1.5 or 3 hours  
**\$42 pp or \$80pp**



## TEAM BUILDING

1x game session, 1x team activity  
8 – 100+ participants  
3 hours  
**\$80 pp**

FEATURED IN  
ALL PACKAGES  
HOSTED AT  
ESCAPE HUNT



TEA AND  
BISCUITS



CERTIFICATE FOR  
THE WINNING TEAM



PHOTO SESSION  
WITH PROPS

OPTIONAL  
EXTRAS

- ✦ Merchandise package for winning team or all participants starting from \$5
- ✦ On-site catering and premium alcoholic beverages available (see page 20)

If you have less or more than the required amount of players, please contact us and we'll sort something out.



# PACKAGE OVERVIEW



## TEAM SOCIAL QUIZ ROOM

1x game session, 2x Quiz Room  
immersive trivia games  
8 – 100+ participants  
2.5 hours  
**\$80pp**



## TEAM SOCIAL VIRTUAL REALITY

1x game session, 1x VR experience  
8 – 24 participants  
2.5 hours  
**\$99pp**



## TEAM OFFSITE

**HOSTED AT ESCAPE HUNT**

Exclusive venue hire for your offsite  
Up to 100+ participants  
From 3 hours up to 9 hours  
**Custom quote on request**

## TEAM ONSITE

**HOSTED AT YOUR LOCATION**

On-site immersive game  
Minimum 16 participants  
From 1+ hours of gameplay  
**From \$25pp**

FEATURED IN  
ALL PACKAGES  
HOSTED AT  
ESCAPE HUNT



TEA AND  
BISCUITS



CERTIFICATE FOR  
THE WINNING TEAM



PHOTO SESSION  
WITH PROPS

OPTIONAL  
EXTRAS

- ✦ Merchandise package for winning team or all participants starting from \$5
- ✦ On-site catering and premium alcoholic beverages available (see page 20)

**If you have less or more than the required amount of players, please contact us and we'll sort something out.**



# TEAM SOCIAL INDOORS

Our Team Social package is perfect for letting your hair down with colleagues. If your hardworking staff deserve a special reward for a job well done then nothing beats the exhilaration of Escape Hunt. Have teams play head-to-head against each other in the same adventure to see who escapes first!

- ✦ Two package options are available:
  - Single 60 min game session
  - Back to back 60 min game sessions – participants play 2 different escape rooms
- ✦ Dress up photo shoot
- ✦ Unlimited tea, coffee, hot chocolate, biscuits and water
- ✦ Certificate for the winning team

## PRICING

1.5 hours	\$42 pp, 1x game session, 8 – 92+ participants
3 hours	\$80 pp, 2 x game sessions, 8 – 92+ participants



TEA AND BISCUITS



CERTIFICATE FOR  
WINNING TEAM



PHOTO SESSION  
WITH PROPS





# TEAM SOCIAL OUTDOORS

Our Team Social Outdoors package is great for getting the team out and about while still having a fun and exciting time. Step outdoors and explore Sydney during an incredible adventure that blurs reality and fiction using a combination of augmented reality and geolocation technology. Teams venture off on an exciting mission complete with iPad and action pack.

Two package options are available:

- Single 80 - 120 min game session
- Back to back game sessions – participants play 2 different experiences (can be both outdoor or 1 indoor escape room and 1 outdoor game)
- ✦ Dress up photo shoot
- ✦ Unlimited tea, coffee, hot chocolate, biscuits and water
- ✦ Certificate for the winning team

## PRICING

Up to 2 hours	\$42 pp, 1x game session, 8 – 100 participants
Up to 4 hours	\$80 pp, 2 x game sessions, 8 – 100 participants



TEA AND BISCUITS



CERTIFICATE FOR  
WINNING TEAM



PHOTO SESSION  
WITH PROPS



# TEAM BUILDING

Our experience shows that the ideal program is a combination of an escape room followed by a team building activity. The idea is learning through play. We use game play to challenge people individually and in group settings.

- ✦ 60 mins escape game session
- ✦ 30 mins break / networking in the lounge
- ✦ 60 mins team building activity
- ✦ Dress up photo shoot
- ✦ Unlimited tea, coffee, hot chocolate, biscuits and water
- ✦ Certificate for the winning team

## PRICING

3 hours	\$80 pp, 1x game session, 1x team activity 8 – 100 participants
---------	--



TEA AND BISCUITS



CERTIFICATE FOR  
WINNING TEAM



PHOTO SESSION  
WITH PROPS



# TEAM BUILDING – EXAMPLE ACTIVITIES

## DETECTIVE DRAMA

---

(60 mins)

- ✦ Each player has to come up with two truths and one lie about themselves
- ✦ For 10-15 minutes, the whole group mingles around and asks each other questions to get to know each other better
- ✦ Each player then presents their three statements and the group has to vote which one is the “lie”
- ✦ The best Detective is the player who correctly guesses the most amount of lies and the Best Liar is the player whose lie had the least amount of votes

## PRINT & PLAY ESCAPE GAME

---

(60 mins)

- ✦ In small groups of 4 to 6, players are given a printed version of our popular escape room concept
- ✦ They must work together to crack the clues and solve the mission
- ✦ Example games include:
  - A Curious Tea Party
  - Stolen
  - The Murder on Christmas Eve
  - The School of Magic
  - The Day of the Dead
  - Murder at the Mansion

## DETECTIVE CHARADES

---

(45 – 60 mins)

- ✦ The group is divided into two teams and each player is given a game card
- ✦ Players take turns using mime to act out their game card
- ✦ The first team to guess the answer wins a point for their team
- ✦ The winning team is the one with the most points after all the players have acted out their game cards



# TEAM SOCIAL QUIZ ROOM

Looking for an event offering both collaboration and some fun competition? Combine two unique experiences to have the best of both worlds. An exhilarating escape room followed by Australia's only immersive TV style trivia experience provided by our partner [Quiz Room](#) (upstairs from Escape Hunt).

After escaping the room, experience a real-life staged TV game show played in teams of up to 18. Play the Original Quiz or the Music Quiz.

- ✦ 60 mins escape game session
- ✦ 2 x 30 min Quiz Room immersive trivia games
- ✦ Dress up photo shoot
- ✦ Unlimited tea, coffee, hot chocolate, biscuits and water
- ✦ Certificate for the winning team

NOTE: Escape Hunt and Quiz Room are separate businesses who partner together to offer this experience

## PRICING

2.5 hours	\$80 pp, 1x game session, 2x Quiz Room games 8 – 100+ participants
-----------	---



TEA AND BISCUITS



CERTIFICATE FOR  
WINNING TEAM



PHOTO SESSION  
WITH PROPS



# TEAM SOCIAL VIRTUAL REALITY

The ultimate in unique and innovative team building events. An exhilarating escape room followed by one of the world's best team-based virtual reality experiences provided by our partner [Virtual Room](#) (upstairs from Escape Hunt).

After escaping the room, experience a fully collaborative VR adventure played in teams of up to 4. Travel back in time to places like ancient Egypt or the moon.

- ✦ 60 mins escape game session
- ✦ 40-50 mins Virtual Room virtual reality experience
- ✦ Dress up photo shoot
- ✦ Unlimited tea, coffee, hot chocolate, biscuits and water
- ✦ Certificate for the winning team

NOTE: Escape Hunt and Virtual Room are separate businesses who partner together to offer this experience

## PRICING

2.5 hours	\$99 pp, 1x game session, 1x VR experience 8 – 24 participants
-----------	---



TEA AND BISCUITS



CERTIFICATE FOR  
WINNING TEAM



PHOTO SESSION  
WITH PROPS





# TEAM OFFSITE

## HOSTED AT ESCAPE HUNT

Thinking of holding your next team meeting away from the office? We can offer a combination of a dedicated rooftop meeting and entertainment space with exhilarating escape game play. An Escape Hunt game can be a brilliant springboard for your own team development discussions or a fun way to round off a day of off-site presentations.

- ✦ 60 mins escape game session
- ✦ Minimum 60 minutes use of our dedicated event space for your meeting
- ✦ Projector, screen and wifi
- ✦ Dress up photo shoot
- ✦ Unlimited tea, coffee, hot chocolate, biscuits and water
- ✦ Certificate for the winning team

**PLAYERS** Up to 100+ participants

**PRICING** Custom quote provided on request



TEA AND BISCUITS



CERTIFICATE FOR  
WINNING TEAM



PHOTO SESSION  
WITH PROPS



# TEAM ON-SITE

## HOSTED AT YOUR LOCATION

If you're looking for an on-site solution, Escape Hunt can bring the adventure to you through immersive game play and challenging-fun that requires little to no space at all. We have a wide range of [exhilarating offsite games](#) available, which can be used for a variety of team building and social activities, or can even be used as the perfect addition to interview and assessment centres for recruitment.

- ✦ 1+ hour of gameplay
- ✦ Suggested minimum of 16 players (4 teams)
- ✦ Certificate for winning team by request
- ✦ Learning and development through immersive adventure

### PRICING

Less than 50 participants	\$35pp
50-100 participants	\$30pp
100+ participants	\$25pp



CERTIFICATE FOR  
WINNING TEAM





# OPTIONAL EXTRAS – EVENT SPACE

We offer a private meeting and event space on level 7 just above Escape Hunt.

There are multiple spaces for hire including the main bar, balconies and a conference space.

It is fully licensed and offers a range of food and beverage options (see following page).

A single space can be booked or the entire venue can be hired. Hiring a single space means other groups may occupy another space during your event. If you wish to have full exclusivity, then you must hire the entire venue.

You can choose to hire an **area by the hour** **OR** commit to a **minimum spend per hour**.

If you choose a drinks package from the following page all venue hire fees will be waived for the space that is suitable for your group size.

Area	Capacity	Price per hour	Minimum spend per hour
Party Nook	12	\$110	\$220
Small Balcony	8	\$100	\$200
Large Balcony	12	\$120	\$240
Main Bar	25	\$160	\$320
Upper Conference Room	25	\$160	\$320
Main Bar + Party Nook	37	\$220	\$440
Main Bar + Balconies	45	\$250	\$500
Entire Venue	82	\$300	\$600

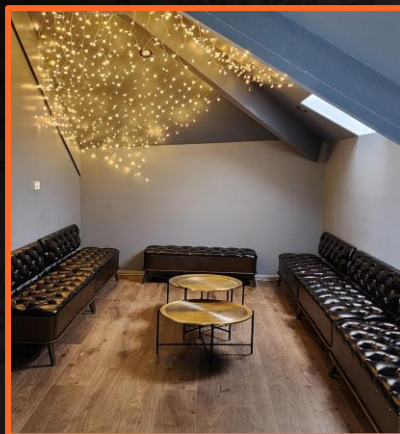
Please consult staff for any special dietary needs.  
All prices inclusive of GST.



# EVENT SPACE PHOTOS



**Main Bar & Large Balcony**



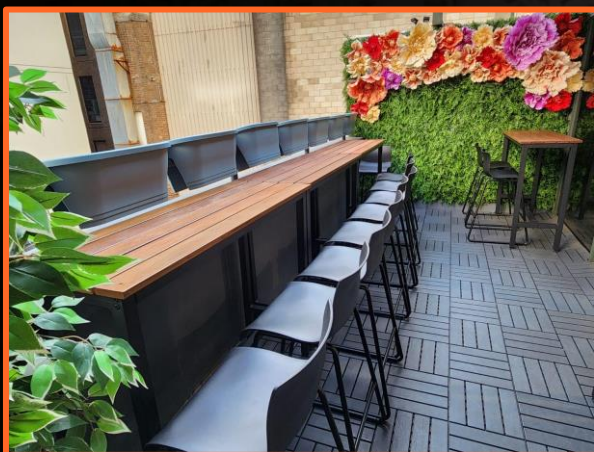
**Party Nook**



**Main Bar & Party Nook**



**Upper Conference**



**Large Balcony**



**Small Balcony**

We are a licensed venue.  
 Party Nook is shared space with the Main Bar where people may be consuming alcoholic beverages



# OPTIONAL EXTRAS – DRINKS AND CATERING

A full range of catering options are available including breakfast, morning tea, lunch, afternoon tea, cocktail canapes and dinner – please request our latest brochure. All catering is subject to a 5% surcharge for organisation, set up and disposal.

A selection of premium beers, ciders, wines and soft drinks are available for purchase on a pay as you go basis.

Alternatively, you can take a drinks package. All drinks packages include free venue hire at Loft on George:

- 1 Hour Drinks Package      \$30pp      Choice of water, soft drinks, beer, cider or wine
- 2 Hour Drinks Package      \$45pp      Choice of water, soft drinks, beer, cider or wine

BYO catering is available for \$5pp



Please consult staff for any special dietary needs.  
All prices inclusive of GST.





# CONTACT US

We look forward to working with you on making your event a great success.

## Escape Hunt Sydney

Level 4, 393 George Street, Sydney, NSW 2000

[sydney@escapehunt.com](mailto:sydney@escapehunt.com)

+61 2 9299 3929

[escapehunt.com/sydney](http://escapehunt.com/sydney)





# KEY TERMS AND CONDITIONS

- ✦ Full pre-payment is required at least 7 days prior to your event for the estimated number of participants – payment can be credit card, bank transfer or PayPal
- ✦ Minimum numbers: there is a minimum of 8 participants for our team building packages
- ✦ Final attendee numbers must be provided 7 days before the event
- ✦ Refunds: you will be refunded for no shows up to a maximum of 20% of the expected attendees. E.g. if you book for 40 participants and 30 turn up you will be refunded for 8 participants.
- ✦ Special requests: if you have any special requests (e.g. projector screen) please let us know in advance
- ✦ Cancellations:
  - Events cancelled with less than 7 days notice will be refunded 20% of the event charge (excluding catering)
  - Events cancelled with 7 – 14 days notice will be refunded 50% of the event charge
  - Events cancelled with 15 – 30 days notice will be refunded 75% of the event charge
  - Events cancelled with more than 30 days notice will be refunded 100% of the event charge
- ✦ On-site catering options are made fresh to order – changes or cancellations must be made at least 7 days before the event
- ✦ Rescheduling: events may be rescheduled with at least 3 days notice:
  - Events rescheduled with 3- 6 days notice will attract a 20% rescheduling fee (excluding catering costs)
  - Events rescheduled with 7+ days notice can be rescheduled for free